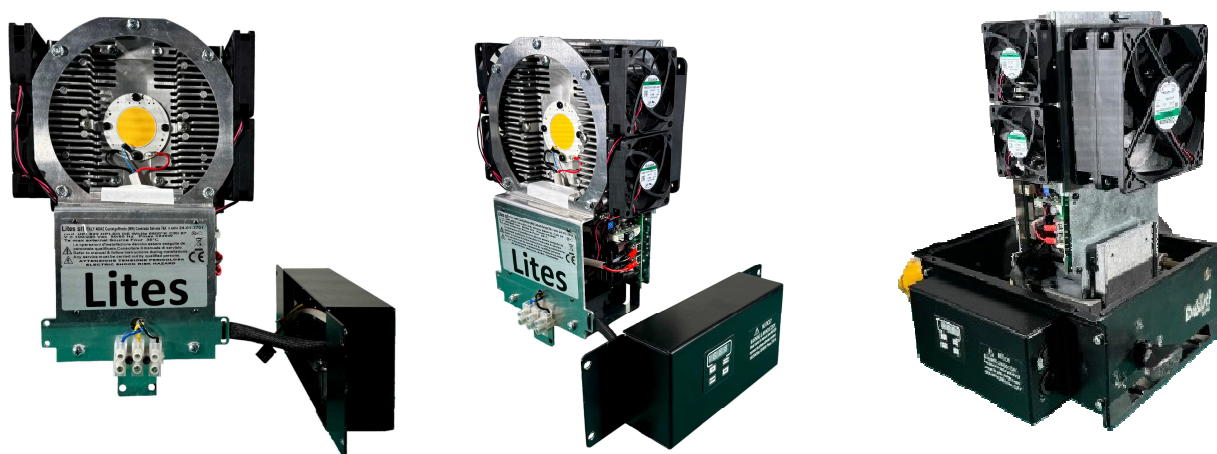


HPLED DE T

“tunable 3000°K-5700°K ”

Retrofit for Fresnel
Leonardo 2000 W (De Sisti)



HPLED DE-T Tunable is a retrofit module that allows a traditional 2000 W Leonardo Fresnel (De Sisti) with a halogen lamp to be upgraded into an efficient LED Fresnel with tunable white light from 3000°K (warm white) to 5700°K (cool white), including all intermediate color temperatures. By installing the module, it is possible to eliminate traditional phase-control dimmers and achieve direct control of the fixture via DMX 512 signal. With the HPLED DE series, operating costs are reduced, including electricity consumption (220 W), air conditioning, maintenance, and lamp replacement—without the need to purchase new LED fixtures. Made in Italy.



General specifications:

- LED array
- CRI: 96 for 3000 K LED, CRI 94 for 5700 K LED
- LED lifetime (L80, hours at 80% output): 50,000 hours
- 10 presets selectable from the display for manual use without a DMX signal
- 2 programmable programs for operation without a DMX controller
- Dimmer: 8 or 16 bit, 4 selectable curves (Quad, Quad2, Scur, Line)
- Flicker-free control for cameras, frequency range from 1 kHz to 10 kHz
- Smooth dimming (Sfast, Fast, Med, Slow)
- Synchronized electronic strobe (0 to 28 Hz)
- Modes: 5 DMX modes DMX (2 ch, U2 ch, 3 ch, U9 ch,)
- RDM (Remote Device Management)
- Fan with four selectable speeds (LOW, MEDL, MEDH, AUTO), noise level from 12 dB to 34 dB
- Display with four buttons

HPLD DE can be installed in the following Fresnel lenses:

- 320 Leonardo 2000 W tungsteno Fresnel
- 321 Leonardo 2000 W tungsteno Fresnel

Electrical specifications:

- Power supply: 100–240 V ~ 50/60 Hz, auto-setting
- Power consumption: 220 W, $\cos\phi$ 0.98
- Signal connectors: Neutrik 5-pin XLR (IN and OUT)
- Firmware update: via DMX connectors

Compliance:

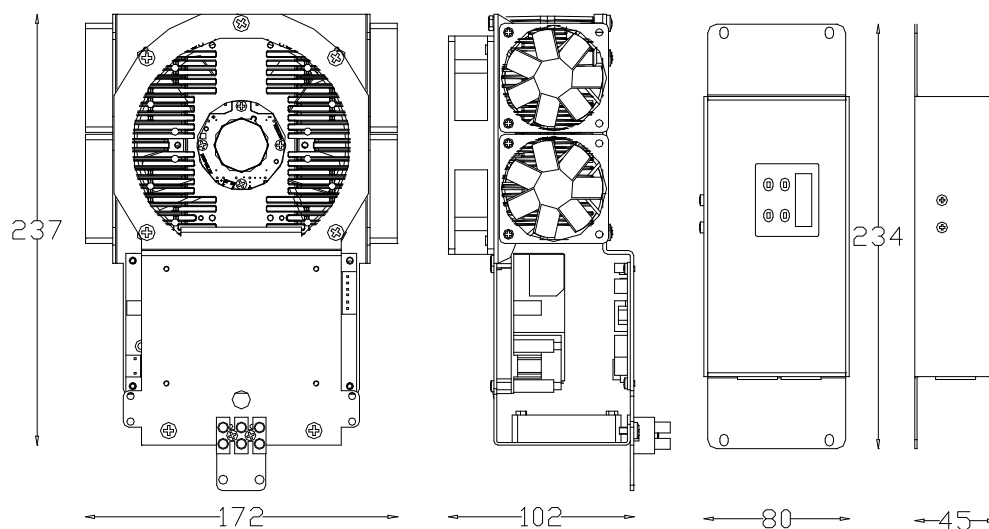
- Compliant with applicable standard 

Thermal specifications:

- (Ta): $-10\text{ }^{\circ}\text{C}$ to $+35\text{ }^{\circ}\text{C}$
- Temperature sensor on LED
- Temperature sensor on driver board

Dimensional specifications:

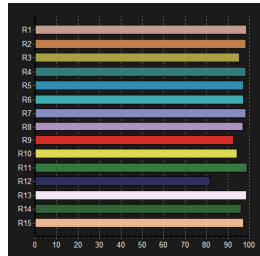
- See drawing:
- Net weight 2.7 Kg
- Packed weight 3.3 Kg
- Packaging volume: 0.015 m^3



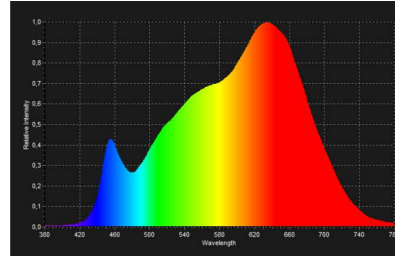
Photometric data LED 3000°K CRI 96

Indicative measurements taken at the center with the fixture powered on for 30 minutes at an ambient temperature of 25 °C.

	Distance m	4 m	6 m	8 m	10 m	12 m	14 m
Leonardo 2000 zoom 14°	Lux	4.094	1.819	1.023	655	455	334
	Diameter ø m	0,88	1,32	1,76	2,2	2,65	3,09
Leonardo 2000 zoom 70°	Lux	602	267	150	96	67	49
	Diameter ø m	4,9	7,35	9,8	12,25	14,70	17,15



White 3000° CRI 96

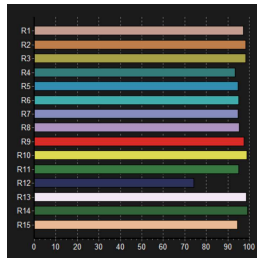


White 3000 Curve

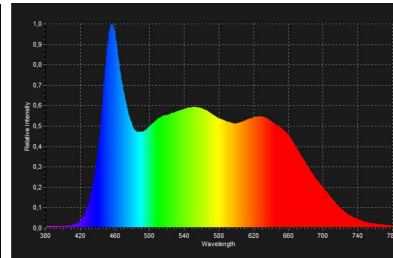
Photometric data LED 5700°K CRI 94

Indicative measurements taken at the center with the fixture powered on for 30 minutes at an ambient temperature of 25 °C.

	Distance m	4 m	6 m	8 m	10 m	12 m	14 m
Leonardo 2000 zoom 14°	Lux	4.813	2.139	1.203	770	535	393
	Diameter ø m	0,88	1,32	1,76	2,2	2,65	3,09
Leonardo 2000 zoom 70°	Lux	688	306	172	110	76	56
	Diameter ø m	4,9	7,35	9,8	12,25	14,70	17,15



White 5700° CRI 94

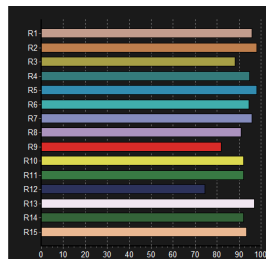


White 5700° Curve

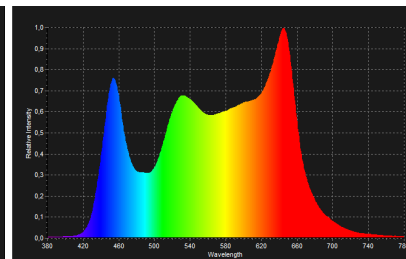
Photometric data LED 4000°K CRI 95

Indicative measurements taken at the center with the fixture powered on for 30 minutes at an ambient temperature of 25 °C.

	Distance m	4 m	6 m	8 m	10 m	12 m	14 m
Leonardo 2000 zoom 14°	Lux	6.625	2.944	1.656	1.060	736	541
	Diameter ø m	0,88	1,32	1,76	2,2	2,65	3,09
Leonardo 2000 zoom 70°	Lux	938	417	234	150	104	77
	Diameter ø m	4,9	7,35	9,8	12,25	14,70	17,15



White 4000° CRI 95



White 4000° Curve

The information contained in this document has been carefully prepared and checked. However, no responsibility is assumed for any inaccuracies. Lites srl reserves the right to make changes or functional modifications at any time without prior notice.